

 **Primary 5 Science (Term 2) - Maris Stella (2020)** [Add Questions](#)[Assign](#)[Settings](#)[Review](#)[Duplicate](#)[Print](#)[Delete](#)[Assign Test](#)**Test Introduction**[+ Add Introduction](#)**32 Questions** (37 Points)Question Bank: 9,275 Questions 

Test Questions

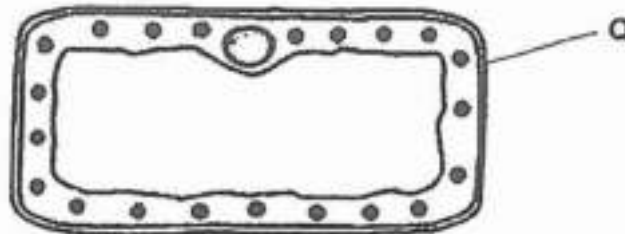
0 Test Assignments

Question 1

Primary 5 Science » Primary 5 Science (Term 2)

2 pts

The diagram below shows a leaf cell.



What is the function of Q?

- A) gives the cell a fixed shape.
- B) contains genetic information
- C) controls all activities in the cell
- D) controls substances moving in and out of the cell

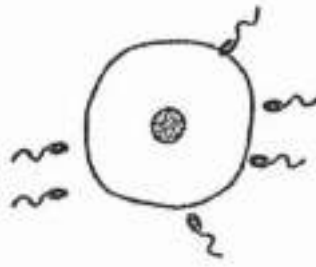
Question Type: Multiple Choice
Randomize Answers: No
Date Added: Tue 7th Sep 2021
Last Modified: N/A
QID#: 28,943,195

Question 2

Primary 5 Science » Primary 5 Science (Term 2)

2 pts

The diagram below shows cells during a process in the reproduction of human.



What is the process shown in the above diagram?

- A) pollination
 B) fertilisation
 C) cell division
 D) germination

Question Type: Multiple Choice
Randomize Answers: No
Date Added: Tue 7th Sep 2021
Last Modified: N/A
QID#: 28,943,203

Question 3

Primary 5 Science » Primary 5 Science (Term 2)

2 pts

Which of the following is the unit of life for a tree and human?

- A)

Tree	Human
cell	cell
- B)

Tree	Human
nucleus	nucleus
- C)

Tree	Human
cell wall	cell membrane
- D)

Tree	Human
chloroplast	nucleus

Question Type: Multiple Choice
Randomize Answers: No

Date Added: Tue 7th Sep 2021
 Last Modified: N/A
 QID#: 28,943,221

[Answers](#) | [Edit](#) | [Duplicate](#) | [Used In](#) | [Reorder](#)

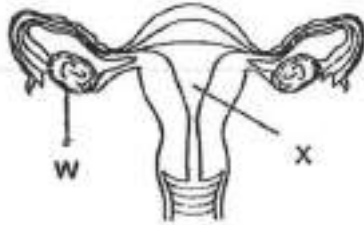
[Remove From Test](#)

Question 4

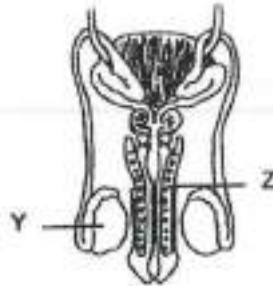
Primary 5 Science » Primary 5 Science (Term 2)

2 pts

The diagrams below show both the female and male human reproductive systems.



female reproductive system



male reproductive system

Which of the following parts produce reproductive cells?

- A) X and Y
- B) X and Z
- ✓ C) W and Y
- D) W and Z

Question Type: Multiple Choice
 Randomize Answers: No
 Date Added: Tue 7th Sep 2021
 Last Modified: N/A
 QID#: 28,943,233

[Answers](#) | [Edit](#) | [Duplicate](#) | [Used In](#) | [Reorder](#)

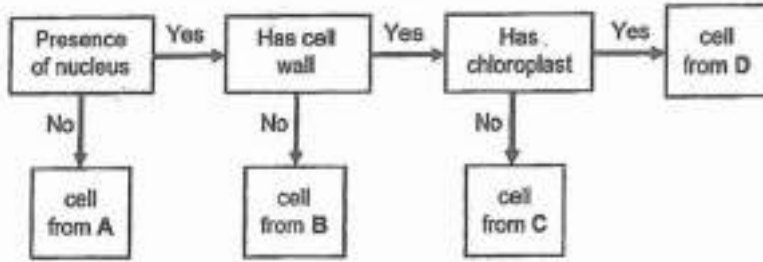
[Remove From Test](#)

Question 5

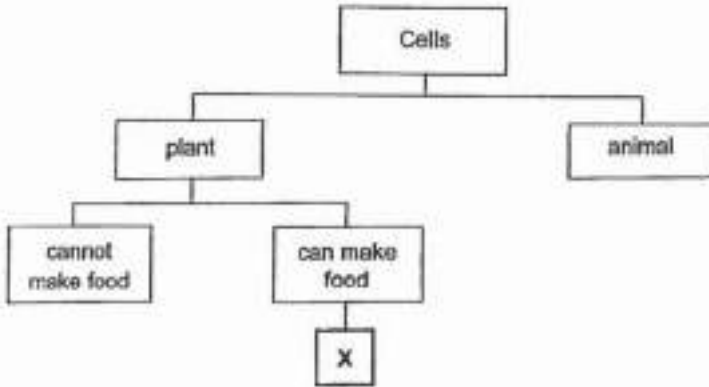
Primary 5 Science » Primary 5 Science (Term 2)

2 pts

Fahimah examined some cells from organisms A, B, C and D under a microscope and recorded her observations in the chart below.



She then examined cell X and classified it as shown below.



From which organism, A, B, C or D, is cell X most likely taken from?

- A) A
- B) B
- C) C
- ✓ D) D

Question Type: Multiple Choice
 Randomize Answers: No
 Date Added: Tue 7th Sep 2021
 Last Modified: N/A
 QID#: 28,943,240

[Answers](#) |
 [Edit](#) |
 [Duplicate](#) |
 [Used In](#) |
 [Reorder](#)

[Remove From Test](#)

Question 6

Primary 5 Science » Primary 5 Science (Term 2)

2 pts

Teck Long made some statements about reproduction in humans and flowering plants.

- A The fertilised egg is found in the ovary.
- B Fertilisation occurs in a female reproductive part.
- C Male reproductive cells are formed in the anthers.

Which of the following is correct?

A)

Plants	Humans
B	A and B

B)

Plants	Humans
A and C	B

C)

Plants	Humans
A, B, C	A

✓ D)

Plants	Humans
A, B, C	B

Question Type: Multiple Choice
Randomize Answers: No
Date Added: Tue 7th Sep 2021
Last Modified: N/A
QID#: 28,943,263

[Answers](#) | [Edit](#) | [Duplicate](#) | [Used In](#) | [Reorder](#)

[Remove From Test](#)

Question 7

Primary 5 Science » Primary 5 Science (Term 2)

2 pts

The diagram shows two flowers from the same plant.



Pollination between the two flowers occurs when pollen grains are transferred from

- A) W to Y
 B) W to Z
 C) X to Y
 ✓ D) X to Z

Question Type: Multiple Choice
Randomize Answers: No
Date Added: Tue 7th Sep 2021
Last Modified: N/A
QID#: 28,943,274

[Answers](#) | [Edit](#) | [Duplicate](#) | [Used In](#) | [Reorder](#)

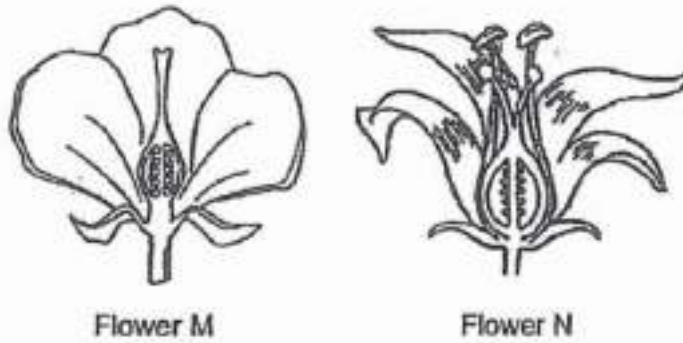
[Remove From Test](#)

Question 8

Primary 5 Science » Primary 5 Science (Term 2)

2 pts

Two flowers, M and N, are shown.



Which of the following is correct about flowers M and N?

- A) Both flowers have anthers.
- B) Only flower N can be pollinated.
- ✓ C) Both flowers can develop into fruits.
- D) Flower M only has male reproductive parts.

Question Type: Multiple Choice
Randomize Answers: No
Date Added: Tue 7th Sep 2021
Last Modified: N/A
QID#: 28,943,286

[Answers](#) | [Edit](#) | [Duplicate](#) | [Used In](#) | [Reorder](#)

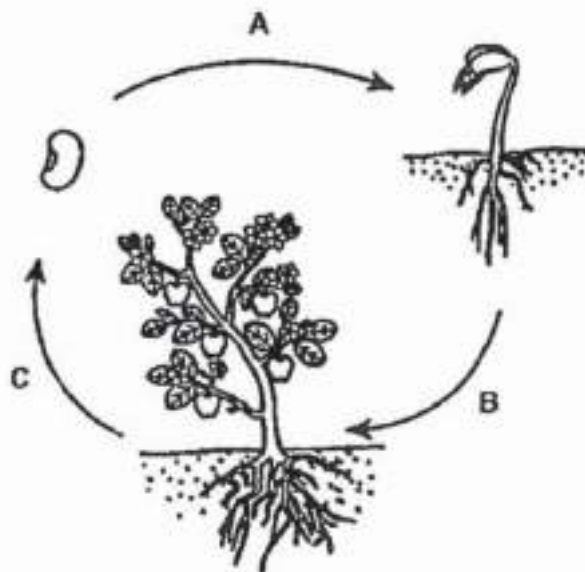
[Remove From Test](#)

Question 9

Primary 5 Science » Primary 5 Science (Term 2)

2 pts

The arrows in the diagram below represent different processes.



What do arrows A, B and C represent?

- A)

A	B	C
dispersal	fertilisation	pollination
- ✓ B)

A	B	C
germination	fertilisation	dispersal
- C)

A	B	C
dispersal	germination	fertilisation
- D)

A	B	C
germination	pollination	fertilisation

Question Type: Multiple Choice
Randomize Answers: No
Date Added: Tue 7th Sep 2021
Last Modified: N/A
QID#: 28,943,301

[Answers](#) | [Edit](#) | [Duplicate](#) | [Used In](#) | [Reorder](#)

[Remove From Test](#)

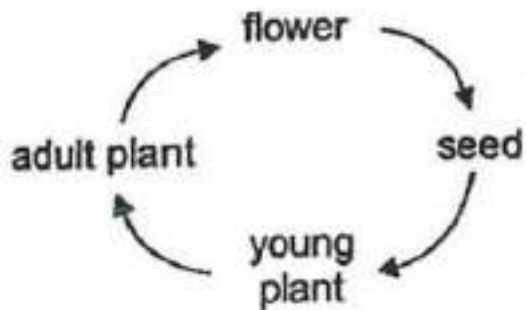
Question 10

Primary 5 Science » Primary 5 Science (Term 2)

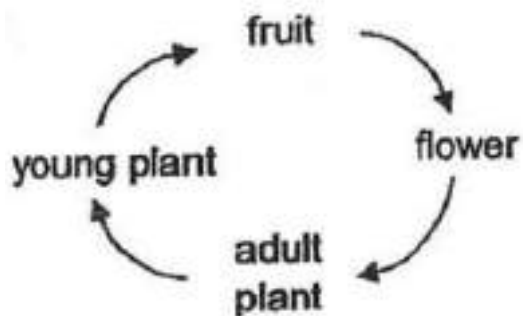
2 pts

Which one of the following correctly shows the stages involved in the development of a flowering plant?

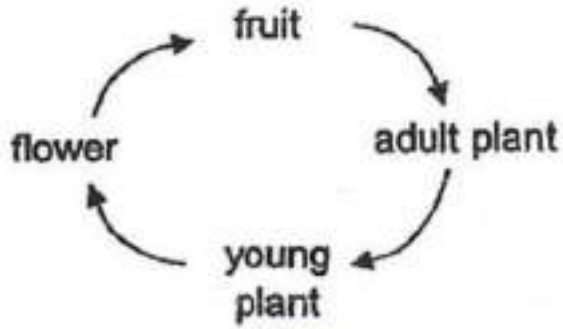
✓ A)



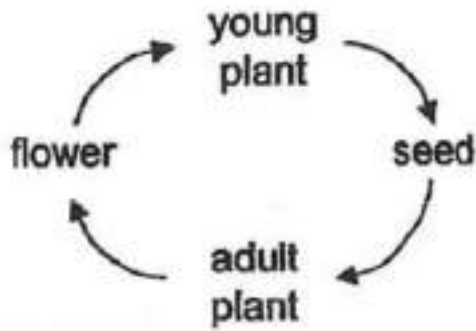
B)



C)



D)



Question Type: Multiple Choice
 Randomize Answers: No
 Date Added: Tue 7th Sep 2021
 Last Modified: N/A
 QID#: 28,943,312

[Answers](#) | [Edit](#) | [Duplicate](#) | [Used In](#) | [Reorder](#)

[Remove From Test](#)

Question 11

Primary 5 Science » Primary 5 Science (Term 2)

2 pts

Study the table below.

Cell parts	Cell		
	X	Y	Z
nucleus	✓	✓	✓
cell wall	✓	✓	
cell membrane	✓	✓	✓
chloroplasts	✓		

Key
 ✓ : present

Which of the following is correct?

A)

Plant Cell	Animal Cell
X	Y and Z

B)

Plant Cell	Animal Cell
X and Z	Y

✓ C)

Plant Cell	Animal Cell
X and Y	Z

D)

Plant Cell	Animal Cell
Y and Z	X

Question Type: Multiple Choice
Randomize Answers: No
Date Added: Tue 7th Sep 2021
Last Modified: N/A
QID#: 28,943,320

[Answers](#) | [Edit](#) | [Duplicate](#) | [Used In](#) | [Reorder](#)

[Remove From Test](#)

Question 12

Primary 5 Science » Primary 5 Science (Term 2)

2 pts

The table below shows the melting point and boiling point of substances T and U.

Substance	Melting Point (°C)	Boiling Point (°C)
T	20	290
U	4	170

Which of the following shows the correct state of substances T and U at 200°C?

A)

Substance T	Substance U
solid	liquid

B)

Substance T	Substance U
liquid	solid

✓ C)

Substance T	Substance U
liquid	gaseous

D)

Substance T	Substance U
gaseous	solid

Question Type: Multiple Choice
Randomize Answers: No
Date Added: Tue 7th Sep 2021
Last Modified: N/A
QID#: 28,943,331

[Answers](#) | [Edit](#) | [Duplicate](#) | [Used In](#) | [Reorder](#)

[Remove From Test](#)

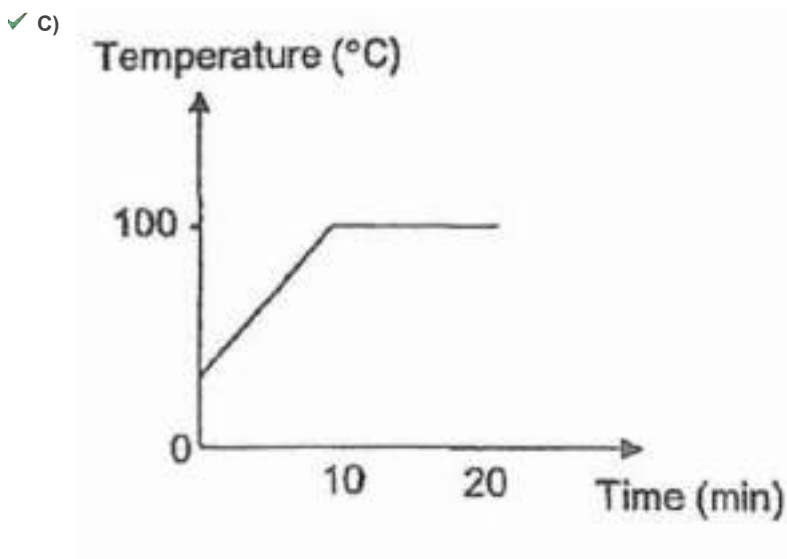
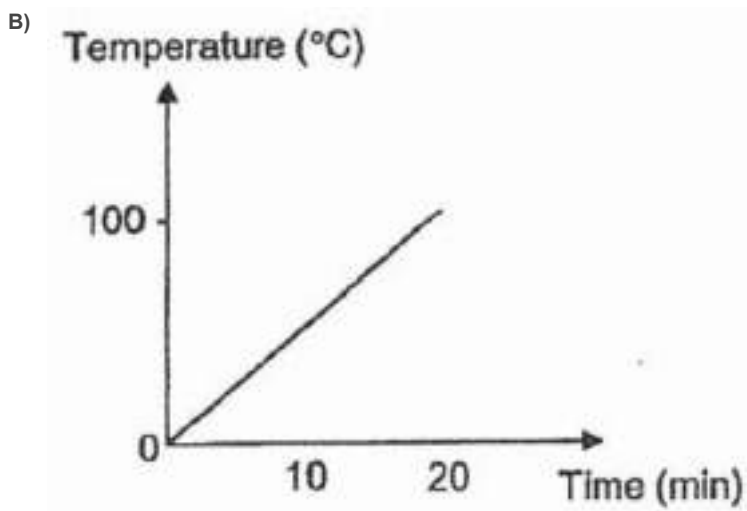
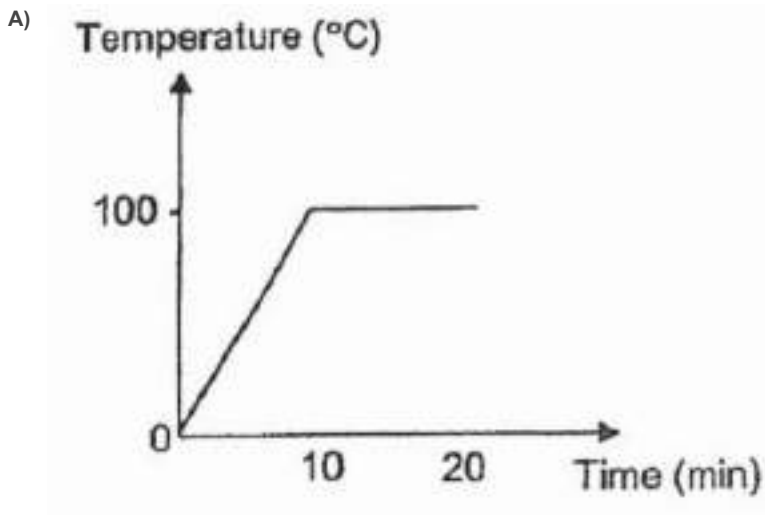
Question 13

Primary 5 Science » Primary 5 Science (Term 2)

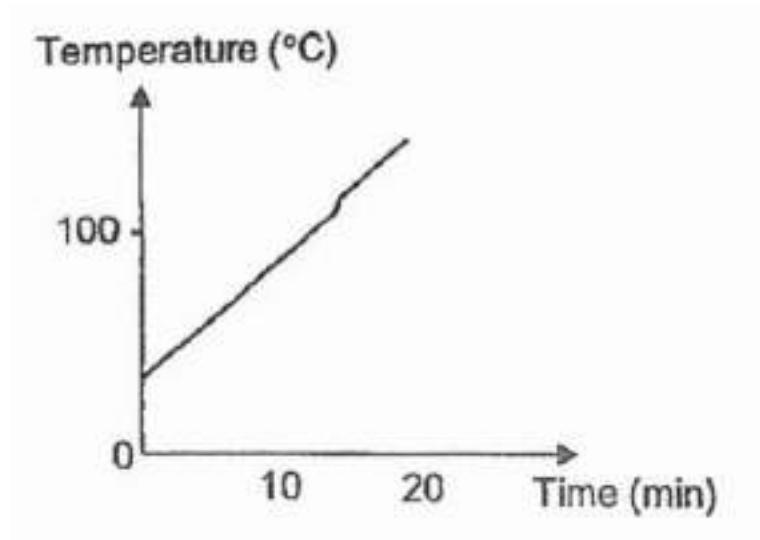
2 pts

Ryan heated a beaker of tap water. After 10 minutes, he observed that the water had started to boil. He continued to heat the water for another 10 minutes.

Which one of the following graphs correctly shows the change in temperature of water?



D)



Question Type: Multiple Choice
Randomize Answers: No
Date Added: Tue 7th Sep 2021
Last Modified: N/A
QID#: 28,943,355

[Answers](#) | [Edit](#) | [Duplicate](#) | [Used In](#) | [Reorder](#)

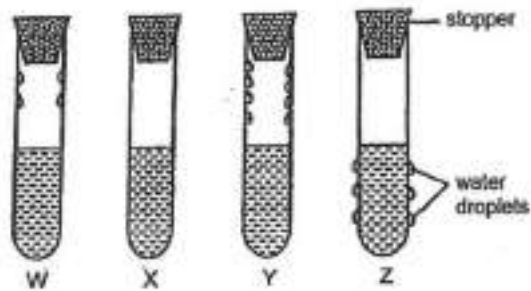
[Remove From Test](#)

Question 14

Primary 5 Science » Primary 5 Science (Term 2)

2 pts

Amirah filled four identical test tubes with the same amount of water at different temperatures. She then covered each test tube with a stopper. The diagrams below show what she observed after some time.



Which of the following correctly shows the temperature of the water in the test tubes, starting from the lowest to the highest temperature?

- A) W, Y, X, Z
 B) Y, W, X, Z
 C) Z, W, Y, X
 ✓ D) Z, X, W, Y

Question Type: Multiple Choice
Randomize Answers: No
Date Added: Tue 7th Sep 2021
Last Modified: N/A
QID#: 28,943,368

[Answers](#) |
 [Edit](#) |
 [Duplicate](#) |
 [Used In](#) |
 [Reorder](#)

[Remove From Test](#)

Question 15

Primary 5 Science » Primary 5 Science (Term 2)

2 pts

Jun Yang wants to investigate the factors affecting the rate of evaporation of water. He prepared four set-ups using identical beakers as shown in the table below.

	Set-ups			
	P	Q	R	S
Temperature ($^{\circ}\text{C}$)	30	30	25	25
Exposed surface area of water (cm^2)	50	120	50	120
Volume of water (cm^3)	500	500	500	400

Which two set-ups should Jun Yang use to find out if the surrounding temperature affects rate of evaporation?

- ✓ A) P and R
- B) P and Q
- C) Q and S
- D) R and S

Question Type: Multiple Choice
Randomize Answers: No
Date Added: Tue 7th Sep 2021
Last Modified: N/A
QID#: 28,943,375

[Answers](#) |
 [Edit](#) |
 [Duplicate](#) |
 [Used In](#) |
 [Reorder](#)

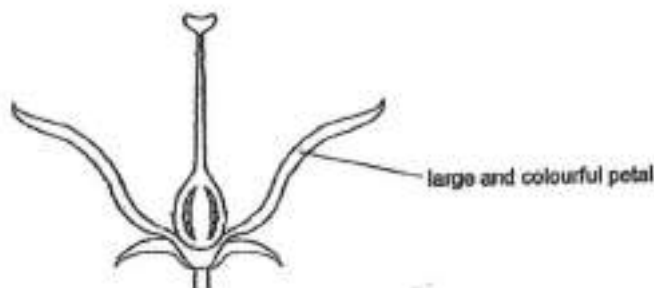
[Remove From Test](#)

Question 16

Primary 5 Science » Primary 5 Science (Term 2)

1 pt

The flower below has two reproductive parts removed.



Before the parts were removed from the flower, the flower could pollinate itself.

Name the two reproductive parts of the flower that were removed.

Accepted answers:

- ✓ The anther and filament
- ✓ Anther and filament
- filament and anther

- ✓
- ✓ Anther, Filament
- ✓ filament, anther

Question Type: Free Text
Date Added: Wed 8th Sep 2021
Last Modified: N/A
QID#: 28,949,131

[Answers](#) | [Edit](#) | [Duplicate](#) | [Used In](#) | [Reorder](#)

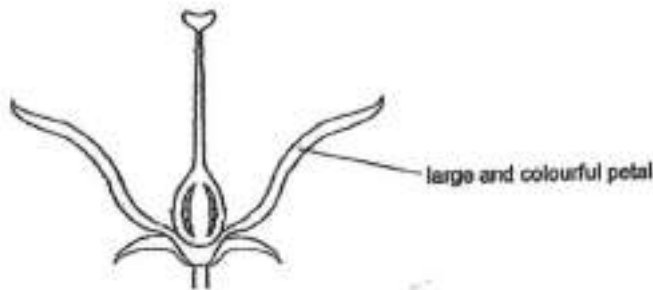
[Remove From Test](#)

Question 17

Primary 5 Science » Primary 5 Science (Term 2)

0 pts

The flower below has two reproductive parts removed.



Before the parts were removed from the flower, the flower could pollinate itself.

Peter says that the flower above will not be able to become a fruit with the parts removed.

Do you agree with Peter? Give a reason for your answer. (1 mark)

This question is designed for extended answers that parent/ teacher will have to assign and guide child to attempt after the test has been completed.

Grading: This question type is not graded on this system and will not affect the final score as it was designed in such a way that it requires manual assistance.

Question Type: Essay
Date Added: Wed 8th Sep 2021
Last Modified: N/A
QID#: 28,949,241

Correctly answered feedback

No. The flower can still be pollinated by other plants thus allowing the flower to become a fruit after being fertilized.

Incorrectly answered feedback

No. The flower can still be pollinated by other plants thus allowing the flower to become a fruit after being fertilized.

[Answers](#) | [Edit](#) | [Duplicate](#) | [Used In](#) | [Reorder](#)

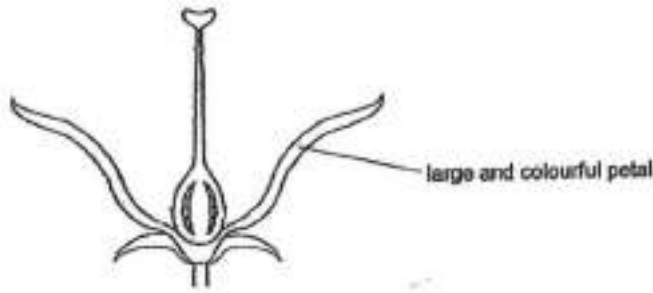
[Remove From Test](#)

Question 18

Primary 5 Science » Primary 5 Science (Term 2)

0 pts

The flower below has two reproductive parts removed.



Before the parts were removed from the flower, the flower could pollinate itself.

How do large and colourful petals help in reproduction? (1 mark)

This question is designed for extended answers that parent/ teacher will have to assign and guide child to attempt after the test has been completed.

Grading: This question type is not graded on this system and will not affect the final score as it was designed in such a way that it requires manual assistance.

Question Type: Essay
 Date Added: Wed 8th Sep 2021
 Last Modified: N/A
 QID#: 28,949,297

Correctly answered feedback

It attracts agents of pollination which carry pollen grains which will fertilized the ovule.

Incorrectly answered feedback

It attracts agents of pollination which carry pollen grains which will fertilized the ovule.

Answers | Edit | Duplicate | Used In | Reorder

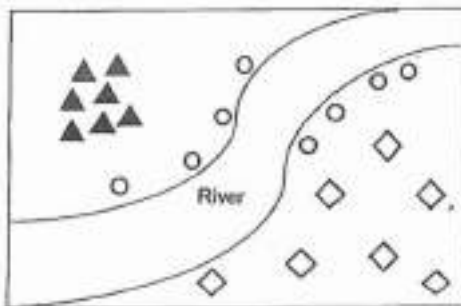
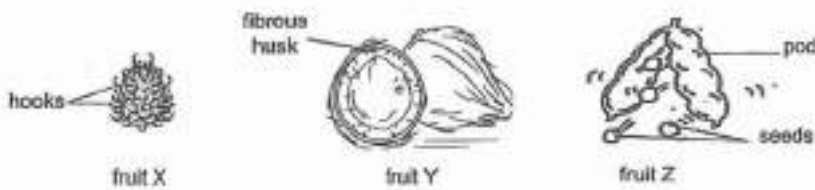
Remove From Test

Question 19

Primary 5 Science » Primary 5 Science (Term 2)

1 pt

The diagrams below show fruits X, Y and Z and the distribution pattern of its young.



Which

fruit, X, Y or Z, does each symbol most likely represent?

Clue

Match

X

◇ : Fruit _____

Points: +0.3 -0

Z

▲ : Fruit _____

Points: +0.3 -0

Y

○ : Fruit _____

Points: +0.4 -0

Question Type: Matching
Shuffle Mode: Shuffle Matches Only
Date Added: Wed 8th Sep 2021
Last Modified: N/A
QID#: 28,949,341

[Answers](#) | [Edit](#) | [Duplicate](#) | [Used In](#) | [Reorder](#)

[Remove From Test](#)

Question 20

Primary 5 Science » Primary 5 Science (Term 2)

0 pts

The diagrams below show fruits X, Y and Z and the distribution pattern of its young.

Explain how the fibrous husk of fruit Y helps in its dispersal. (1 mark)

This question is designed for extended answers that parent/ teacher will have to assign and guide child to attempt after the test has been completed.

Grading: This question type is not graded on this system and will not affect the final score as it was designed in such a way that it requires manual assistance.

Question Type: Essay
Date Added: Wed 8th Sep 2021
Last Modified: N/A
QID#: 28,949,344

Correctly answered feedback

The fibrous husk traps air which allows Y to stay afloat on water longer thus allowing Y to be dispersed further away from the parent plant.

Incorrectly answered feedback

The fibrous husk traps air which allows Y to stay afloat on water longer thus allowing Y to be dispersed further away from the parent plant.

[Answers](#) | [Edit](#) | [Duplicate](#) | [Used In](#) | [Reorder](#)

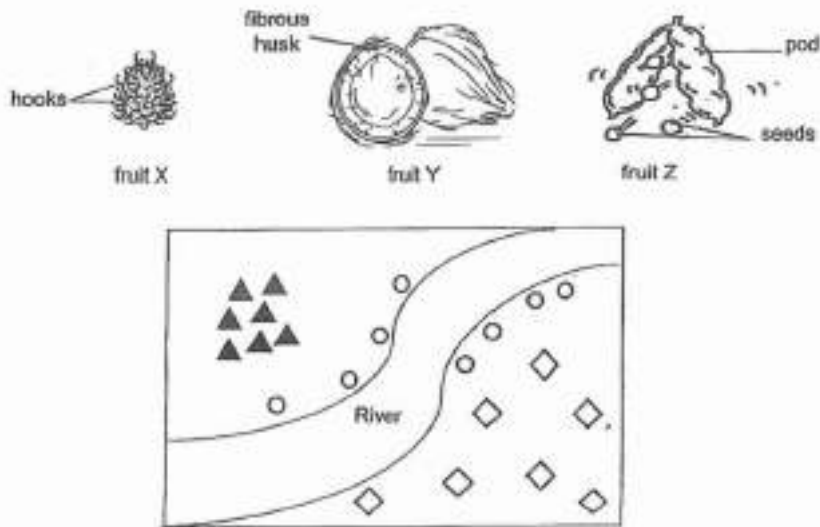
[Remove From Test](#)

Question 21

Primary 5 Science » Primary 5 Science (Term 2)

0 pts

The diagrams below show fruits X, Y and Z and the distribution pattern of its young.



Why is it important for fruits to be dispersed far away from their parent plants? (1 mark)

This question is designed for extended answers that parent/ teacher will have to assign and guide child to attempt after the test has been completed.

Grading: This question type is not graded on this system and will not affect the final score as it was designed in such a way that it requires manual assistance.

Question Type: Essay
Date Added: Wed 8th Sep 2021
Last Modified: N/A
QID#: 28,949,397

Correctly answered feedback

It reduces the seedling's competition for water and sunlight.

Incorrectly answered feedback

It reduces the seedling's competition for water and sunlight.

[Answers](#) | [Edit](#) | [Duplicate](#) | [Used In](#) | [Reorder](#)

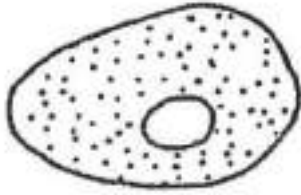
[Remove From Test](#)

Question 22

Primary 5 Science » Primary 5 Science (Term 2)

1 pt

Study cells X and Y below.



Cell X



Cell Y

Which cell, X or Y is an animal cell?

Accepted answers:

- ✓ Cell x
- ✓ X

Question Type: Free Text
 Date Added: Wed 8th Sep 2021
 Last Modified: N/A
 QID#: 28,949,458

[Answers](#) | [Edit](#) | [Duplicate](#) | [Used In](#) | [Reorder](#)

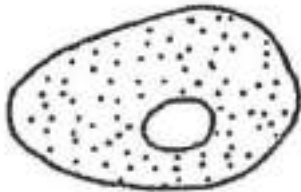
[Remove From Test](#)

Question 23

Primary 5 Science » Primary 5 Science (Term 2)

0 pts

Study cells X and Y below.



Cell X



Cell Y

Give a reason for your answer in the previous question. (1 mark)

This question is designed for extended answers that parent/ teacher will have to assign and guide child to attempt after the test has been completed.

Grading: This question type is not graded on this system and will not affect the final score as it was designed in such a way that it requires manual assistance.

Question Type: Essay
 Date Added: Wed 8th Sep 2021
 Last Modified: N/A
 QID#: 28,949,514

Correctly answered feedback

Cell X does not have a cell wall while Cell Y has a cell wall thus X is an animal cell as animal cells do not have cell wall.

Incorrectly answered feedback

Cell X does not have a cell wall while Cell Y has a cell wall thus X is an animal cell as animal cells do not have cell wall.

[Answers](#) | [Edit](#) | [Duplicate](#) | [Used In](#) | [Reorder](#)

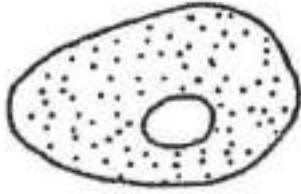
[Remove From Test](#)

Question 24

Primary 5 Science » Primary 5 Science (Term 2)

1 pt

Study cells X and Y below.



Cell X



Cell Y

Name three cell parts that cell X and Y have in common.

Accepted answers:

- ✓ Nucleus, cytoplasm and cell membrane
- ✓ Cytoplasm, nucleus and cell membrane
- ✓ cell membrane, cytoplasm and nucleus
- ✓ cell membrane, nucleus and cytoplasm

Question Type: Free Text
Date Added: Wed 8th Sep 2021
Last Modified: N/A
QID#: 28,949,660

Correctly answered feedback

Nucleus, cytoplasm and cell membrane.

Incorrectly answered feedback

Nucleus, cytoplasm and cell membrane.

[Answers](#) | [Edit](#) | [Duplicate](#) | [Used In](#) | [Reorder](#)

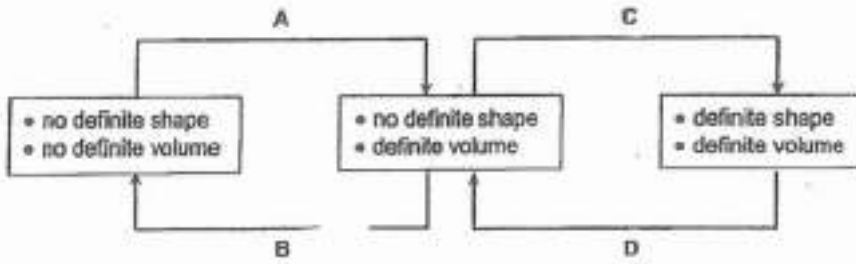
[Remove From Test](#)

Question 25

Primary 5 Science » Primary 5 Science (Term 2)

1 pt

The diagram below shows the properties and change in states of water. A, B, C and D represent the processes that water undergoes when it changes state.



Which processes, A, B, C and D involve heat loss to the surroundings?

Accepted answers:

- ✓ Processes A and C
- ✓ Processes C and A
- ✓ A and C
- ✓ C and A

Question Type: Free Text
Date Added: Wed 8th Sep 2021
Last Modified: N/A
QID#: 28,949,722

[Answers](#) | [Edit](#) | [Duplicate](#) | [Used In](#) | [Reorder](#)

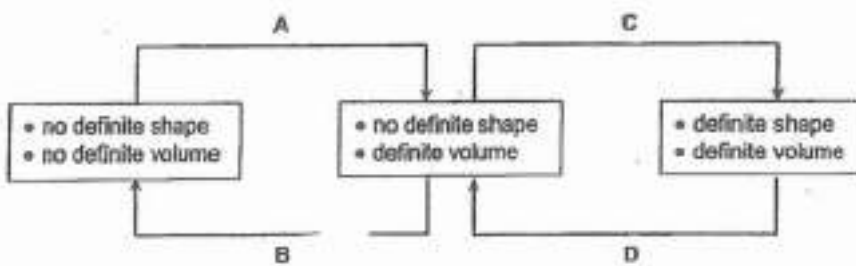
[Remove From Test](#)

Question 26

Primary 5 Science » Primary 5 Science (Term 2)

1 pt

The diagram below shows the properties and change in states of water. A, B, C and D represent the processes that water undergoes when it changes state.



Which processes, A, B, C and D are important in the water cycle?

Accepted answers:

- ✓ Processes A and B
- ✓ Processes B and A
- ✓ A and B
- ✓ B and A

Question Type: Free Text
Date Added: Wed 8th Sep 2021

Last Modified: N/A
QID#: 28,949,811

[Answers](#) | [Edit](#) | [Duplicate](#) | [Used In](#) | [Reorder](#)

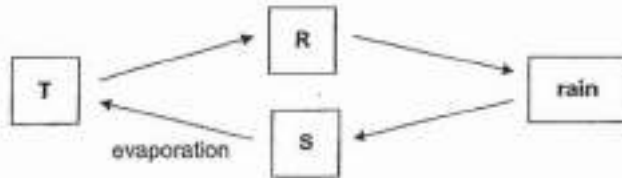
[Remove From Test](#)

Question 27

Primary 5 Science » Primary 5 Science (Term 2)

1 pt

The diagram below shows the water cycle.



In which stages, R, S and T, do water not have definite shape?

[1]

Accepted answers:

- ✓ Stages T, S and R
- ✓ Stages T, R and S
- ✓ Stages R, T and S
- ✓ Stages S, T and R
- ✓ Stages R, S and T
- ✓ Stages S, R and T
- ✓ Stages T, S, R
- ✓ Stages T, R, S
- ✓ Stages R, S, T
- ✓ Stages R, T, S
- ✓ Stages S, T, R
- ✓ Stages S, R, T
- ✓ stages t, r, and s
- ✓ T, S, and R

Question Type: Free Text
Date Added: Wed 8th Sep 2021
Last Modified: N/A
QID#: 28,949,825

[Answers](#) | [Edit](#) | [Duplicate](#) | [Used In](#) | [Reorder](#)

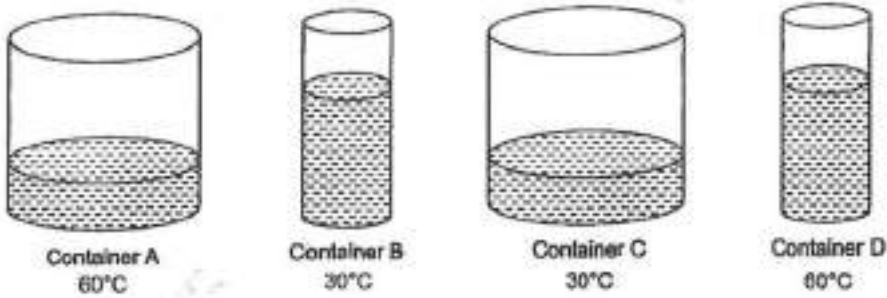
[Remove From Test](#)

Question 28

Primary 5 Science » Primary 5 Science (Term 2)

0 pts

Study the experimental set-ups below. Containers A and C are of the same size, and containers B and D are of the same size. All four containers are made of the same material and have the same thickness. Each container contains 250 ml of water at different temperatures as shown below.



Which container A, B, C or D, would have the least amount of water left after a day? Explain why. (2 marks)

This question is designed for extended answers that parent/ teacher will have to assign and guide child to attempt after the test has been completed.

Grading: This question type is not graded on this system and will not affect the final score as it was designed in such a way that it requires manual assistance.

Question Type: Essay
Date Added: Wed 8th Sep 2021
Last Modified: N/A
QID#: 28,949,833

Correctly answered feedback

Container A as it has the highest temperature and largest exposed surface area compared to B, C and D thus A has the highest rate of evaporation.

Incorrectly answered feedback

Container A as it has the highest temperature and largest exposed surface area compared to B, C and D thus A has the highest rate of evaporation.

[Answers](#) | [Edit](#) | [Duplicate](#) | [Used In](#) | [Reorder](#)

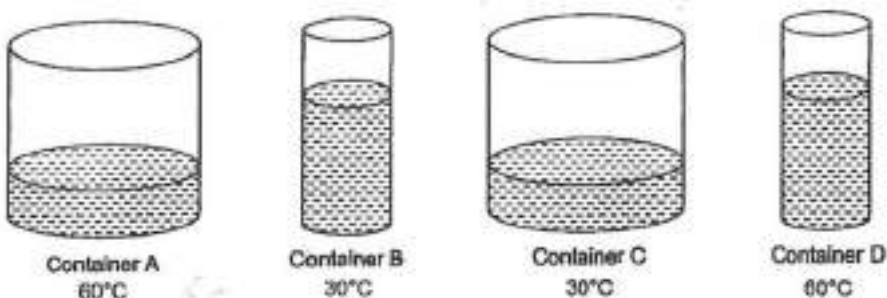
[Remove From Test](#)

Question 29

Primary 5 Science » Primary 5 Science (Term 2)

0 pts

Study the experimental set-ups below. Containers A and C are of the same size, and containers B and D are of the same size. All four containers are made of the same material and have the same thickness. Each container contains 250 ml of water at different temperatures as shown below.



If David compares the results of containers B and C, which factor that affects rate of evaporation is he trying to find out? (1 mark)

This question is designed for extended answers that parent/ teacher will have to assign and guide child to attempt after the test has been completed.

Grading: This question type is not graded on this system and will not affect the final score as it was designed in such a way that it requires manual assistance.

Question Type: Essay
Date Added: Wed 8th Sep 2021
Last Modified: N/A
QID#: 28,949,839

Correctly answered feedback

The exposed surface area.

Incorrectly answered feedback

The exposed surface area.

[Answers](#) | [Edit](#) | [Duplicate](#) | [Used In](#) | [Reorder](#)

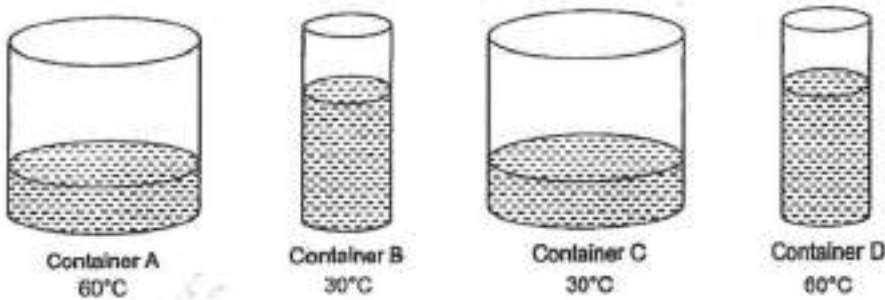
[Remove From Test](#)

Question 30

Primary 5 Science » Primary 5 Science (Term 2)

0 pts

Study the experimental set-ups below. Containers A and C are of the same size, and containers B and D are of the same size. All four containers are made of the same material and have the same thickness. Each container contains 250 ml of water at different temperatures as shown below.



For the experiment mentioned in the previous question, state another important variable that David should keep the same for a fair test. (1 mark)

This question is designed for extended answers that parent/ teacher will have to assign and guide child to attempt after the test has been completed.

Grading: This question type is not graded on this system and will not affect the final score as it was designed in such a way that it requires manual assistance.

Question Type: Essay
Date Added: Wed 8th Sep 2021
Last Modified: N/A
QID#: 28,949,844

Correctly answered feedback

Both containers must have the same surrounding temperature.

Incorrectly answered feedback

Both containers must have the same surrounding temperature.

Question 31

Primary 5 Science » Primary 5 Science (Term 2)

0 pts

State two differences between evaporation and boiling. (2 marks)

This question is designed for extended answers that parent/ teacher will have to assign and guide child to attempt after the test has been completed.

Grading: This question type is not graded on this system and will not affect the final score as it was designed in such a way that it requires manual assistance.

Question Type: Essay
Date Added: Wed 8th Sep 2021
Last Modified: N/A
QID#: 28,949,893

Correctly answered feedback

Difference 1: Boiling of water occurs at 100 °c while evaporation of water occurs all the time.

Difference 2: Boiling occurs throughout the liquid while evaporation occurs only on the surface of the liquid.

Incorrectly answered feedback

Difference 1: Boiling of water occurs at 100°C while evaporation of water occurs all the time.

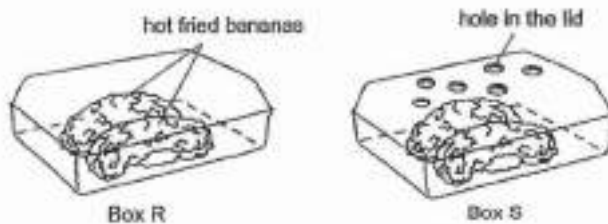
Difference 2: Boiling occurs throughout the liquid while evaporation occurs only on the surface of the liquid.

Question 32

Primary 5 Science » Primary 5 Science (Term 2)

0 pts

Trisha put two pieces of hot fried bananas in box R and box S as shown below.



She observed that the bananas in box R became slightly wet after some time, but not those in box S.

Explain why the bananas in box R became wet. [2]

This question is designed for extended answers that parent/ teacher will have to assign and guide child to attempt after the test has been completed.

Grading: This question type is not graded on this system and will not affect the final score as it was designed in such a way that it requires manual assistance.

Question Type: Essay
Date Added: Wed 8th Sep 2021
Last Modified: N/A
QID#: 28,949,900

Correctly answered feedback

The warm water vapour in box R came into contact with the cooler surface in the box, lost heat and condensed, forming water droplets to form dripping on the banana in R.

Incorrectly answered feedback

The warm water vapour in box R came into contact with the cooler surface in the box, lost heat and condensed, forming water droplets to form dripping on the banana in R.

[Answers](#) | [Edit](#) | [Duplicate](#) | [Used In](#) | [Reorder](#)

[Remove From Test](#)

www.classmarker.com